

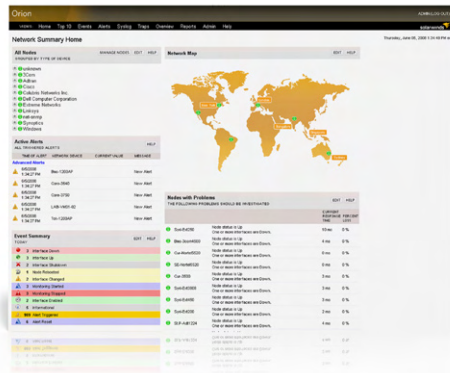
# Orion Network Performance Monitor

FAULT & PERFORMANCE MANAGEMENT

## Put Network Complexity in Its Place with Orion NPM

*“With Orion NPM, it’s no longer a question of ‘wondering what is happening with your network’; it is now ‘knowing what is happening with your network’, taking you from the reactive to the proactive state.”*

*- Jeff Nuxoll,  
Washington State Patrol*



You’ve got a tough job. Your mission – which yes, you already chose to accept – is to deliver 100% availability of all network resources and to keep a close eye on the performance of every device, server and application in your infrastructure while, of course, everything is constantly changing. It’s not easy. But if you could design a network monitoring solution to make your life easier, what would it be? Quick to set up? Elegantly simple to use? Scalable to accommodate your network growth? Supported by a global community of network engineers like you? And inexpensive?

It’s not that we’re psychic. We were founded by network engineers who know what it takes to manage complex networks; they pooled all of their “what if’s” and designed Orion Network Performance Monitor (NPM): a comprehensive web-enabled fault, bandwidth and performance management platform that gives you broad visibility across your network.

Orion NPM enables you to quickly detect, diagnose and resolve network performance problems and outages. It offers out-of-the-box network-centric views that are designed to deliver the critical information network engineers need. And Orion NPM is the easiest product of its kind to use and maintain, meaning you will spend more time actually managing networks, not supporting Orion NPM. Discover why a worldwide community of network engineers rely on Orion NPM and its expandable modules to monitor real-time statistics and the performance of their networks.

### Orion NPM Highlights:

- Monitors and analyzes **real-time, in-depth network performance metrics** for routers, switches, servers, and any other SNMP-enabled devices
- Provides a highly **intuitive, customizable web interface** with point-and-click simplicity that supports multiple views by user and department, as well as cutting-edge map views and “Top 10” views of your global network
- Gets you up and running in less than an hour with **do-it-yourself deployment**
- Enables **advanced alerting** for correlated events, sustained conditions, and complex combinations of device states
- Scales to **accommodate growth** and management needs with a hot standby engine, multiple polling engines, and additional web servers
- Extends management capabilities to **NetFlow** traffic analysis and monitoring of **VoIP** performance, **wireless** devices, **applications** and servers
- Leverages a **Universal Device Poller** to monitor any SNMP-enabled device
- Delivers **integrated community support**, delivering the assistance you need from thousands of network engineers on Thwack, SolarWinds online community

# Orion NPM Features

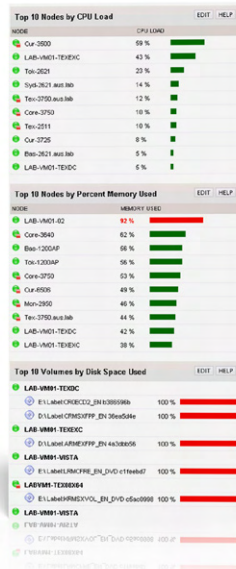
## Performance & Fault Management

Orion NPM provides comprehensive performance, fault management, and network availability tools to ensure that your network is always running at peak performance. Via a cutting-edge web interface, Orion NPM gives you a unified view into the performance of thousands of nodes and interfaces on your network. From a single web page, you can monitor performance management metrics from any SNMP-enabled device, including routers, switches, firewalls, and servers. Commonly monitored metrics include bandwidth utilization, packet loss, latency, errors, discards, and quality of service. With Orion NPM, you get the information you need to quickly fix issues before your users ever have a chance to call the help desk.



*“Orion has everything we were looking for in one package, with a customizable web interface for quick ‘at a glance’ views, e-mail threshold notifications, custom SNMP polling, and network uptime statistics.”*

- Spencer Furey  
PMG, Inc.



## Intuitive Point-and-Click Interface – IMPROVED IN V9

When you need critical network information fast, you can't waste time trying to reverse-engineer the thought process of whoever designed the cryptic user interface of your network management software. Orion NPM's interface was designed by network engineers, for network engineers. The highly intuitive, fully customizable web-based interface offers point-and-click simplicity and allows you to remotely view network fault, availability, and performance information through detailed graphs, tables, and lists.

You'll love the top 10 lists that give you at-a-glance visibility into the nodes and interfaces experiencing the highest amounts of network traffic, capacity utilization, response time, memory usage, CPU load, disk space volume, and more. Plus, real-time network maps enable you to visualize network health by location, while device troubleshooting displays present critical metrics required to quickly resolve problems with network devices.

## Do-it-Yourself Deployment

Deploying Orion NPM is a simple three-step process. First, install and configure Orion NPM using a simple wizard interface. Next, let Orion NPM automatically discover your network. Finally, begin monitoring your network for fault and performance issues. You'll be done in less than an hour. No consultants required. Even better, with Orion NPM's intuitive web interface, you won't need to attend training classes, read books with large animals on the cover, or pour through manuals to start being productive with Orion NPM from day one.

## Advanced Alerting

Orion NPM enables you to quickly and easily configure powerful network alert engines to respond to hundreds of different network scenarios, including multiple condition checks. These network alerts help you recognize and correct issues before your users experience performance degradation or availability issues. With alerting support for correlated events and sustained conditions, Orion NPM ensures that you don't get paged at 3am unless there is a critical issue. Additionally, Orion NPM can automatically escalate network alerts until a problem is resolved.

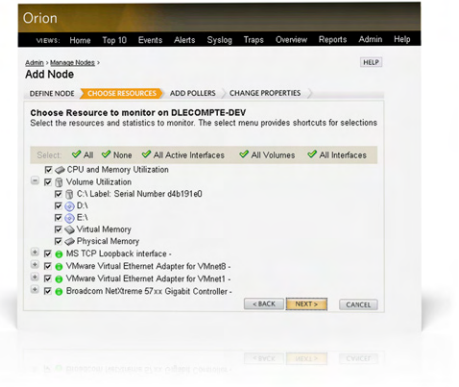
MODEL	MANAGES:
SL100	Up to 100 elements
SL250	Up to 250 elements
SL500	Up to 500 elements
SL2000	Up to 2000 elements
SLX	Unlimited elements

## Enterprise Scalability - IMPROVED IN V9

Orion NPM ensures that your network will never outgrow your management solution. As a highly scalable, network management platform, Orion NPM can accommodate network growth through the addition of a hot standby engine, multiple polling engines, and additional web servers. For distributed networks with multiple instances of Orion NPM, the Orion Enterprise Operations Console (EOC) provides a consolidated command center to provide unified visibility into remote Orion servers. Whether your network is comprised of 50 elements or 100,000 elements, Orion NPM can support your growing environment without major configuration changes.

## Universal Device Poller - NEW IN V9

Out of the box, Orion NPM ships with a MIB database that covers the vast majority of common network devices. But for that handful of odd devices that are lurking in your network - or for newer devices that have MIB tables - you can now collect valuable and highly detailed management data. Orion NPM makes it easy to create a custom poller to monitor any SNMP-enabled device value that has a MIB, including virtually any statistic that a network device records. You can also customize how you want the collected data displayed for graphing, alerting, and reporting purposes. And, using the MIB Transformation Wizard, you can convert MIB values into the units of measurement that are most useful to you.



## Community Support

Thwack is a community website that provides SolarWinds customers with product information, tools and valuable resources. Orion Network Performance Monitor (NPM) now integrates Thwack directly into its web interface, bringing new resources and helpful information directly to you. Having the power of thousands of engineers behind you brings many benefits, especially when it comes to sharing resources. On Thwack, Orion customers share everything from custom reports, custom alerts, and custom views to application monitoring templates, saving you time and making your job easier.

## Report Writer

Orion NPM's advanced reporting engine enables you to quickly generate custom network reports that can be printed or viewed on the web. Shipping with 49 built-in reports, Orion NPM makes it easy to report on performance data over specific time periods or by network segment. A simple interface makes it easy to customize these built-in network reports and allows the creation of completely customized reports using SQL commands. Orion NPM's reports can even be modified to limit the information contained in the report by user profile, making it easy to generate reports for specific departments or recipients.

## Role-based Access Control

Orion Network Performance Monitor (NPM) allows you to establish unique accounts and specify which types of information are displayed within the Orion interface for a particular department, group, or user. This ensures that only the people who need to view specific information have access to it, providing an increased level of internal security. For example, Orion NPM can be configured so that the server team only sees the servers on the network, while the Texas IT group has a view limited to the geography for which they are responsible.

## Orion Modules:

- Application Performance Monitor
- NetFlow Traffic Analyzer
- VoIP Monitor
- Wireless Network Monitor

Orion modules extend the capabilities of Orion NPM to network traffic analysis, VoIP, servers, wireless devices, and applications.

## System Requirements

Minimum Hardware Requirements: CPU Speed: 2.0 GHz; Hard Drive Space: 1 GB; Memory: 2 GB; Operating System: Windows 2003 Server (32-bit or 64-bit) including R2, with IIS installed; .NET 3.5 Framework; Database: SQL Server 2000 SP4 Standard/Enterprise or SQL Server 2005 Express/Standard/Enterprise