



Application Performance Monitor

ORION MODULE

Application Performance Monitor helps you diagnose and fix application problems quickly, so you can finally say with confidence, "It's not the network!"

"Application Performance Monitor has **better granularity** and **provides more details**, so we know more quickly when we have problems."

— Matt Schaeffer,
Systems Administrator,
Home Instead Senior Care®



When business-critical applications aren't running at peak performance – or even worse, aren't running at all – your help desk queue starts growing exponentially, along with the angry phone calls. As the trouble tickets mount, it can be a mad dash to troubleshoot the root cause of the issue. As the network engineer, usually the buck stops with you, regardless of whether the problem stems from the application, the server, or the network.

Orion Application Performance Monitor (APM) extends Orion's powerful monitoring capabilities to applications and servers, enabling you to confidently say "It's not the network!" (or meekly admit, "It is the network.") Finally, you can get the visibility you need into the performance of applications and the underlying operating systems and servers they run on. APM delivers a one-stop shop for monitoring network, application, and server data in a single, unified console, enabling you to quickly identify and resolve issues with business-critical applications – before they affect your end users.

Application Performance Monitor Highlights:

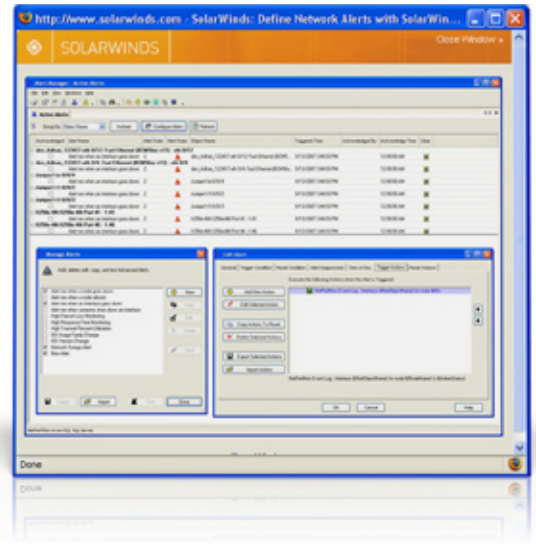
- **Quickly determine the root cause** of application performance issues with a unified view into network, application, and server monitoring data
- Perform **advanced monitoring of Windows, UNIX, and Linux servers** by tracking running services, process availability, number of instances running, memory usage, and CPU utilization via SNMP or WMI
- Actively monitor availability of any port on your network, as well as the **responsiveness of critical network services** with out-of-the-box monitors for DNS, IMAP4, POP3, and more
- Monitor **end-user experience for web applications** using synthetic transactions to check and verify the performance and content of HTML pages
- View **Top Ten lists** for application monitoring data in the Orion console
- **Create application monitoring templates** with custom groups of monitors and settings that can be applied to multiple servers, saving you time and eliminating repetitive configuration tasks



APM Features

Integrated Monitoring Console

APM extends Orion’s performance monitoring capabilities to applications and servers, presenting this data alongside network performance statistics. By capturing this information in an integrated, unified console, APM enables you to visually track the overall health of the application infrastructure and quickly troubleshoot issues by identifying whether the problem stems from an application error or a network issue. With APM, you’ll never again need to run multiple point products or flip between screens to view the application and network data you need to troubleshoot problems. Better yet, with APM, you can leverage Orion’s Top Ten lists for application monitoring data so that you are always aware of what’s happening with your applications and servers.



Advanced Server and Process Monitoring

Orion monitors Windows, UNIX, and Linux servers that support the “Host Resources MIB” for availability, response time, packet loss, traffic, errors, CPU load, memory utilization, available disk space, and more. APM extends this capability to monitor the running services on Windows, UNIX, and Linux servers and tracks process availability, number of instances running, memory usage, and CPU utilization via SNMP or WMI. Monitoring these services and processes ensures that critical applications are up and running and that you receive alerts when a change in status occurs.

Critical Network Services and Port Monitoring

APM actively monitors availability and responsiveness of critical network services with out-of-the-box monitors for DNS (over TCP and UDP), FTP, HTTP, HTTPS, IMAP4, POP3, SMTP, and NNTP. Additionally, APM allows you to create customized TCP port monitors to verify network-based availability and responsiveness of applications. With these capabilities, you can rest assured that you’ll be the first to know about network service outages and performance bottlenecks.

User Experience Monitoring for Web Applications

To ensure that web pages are performing correctly, APM tracks web server response time via HTTP and HTTPS, monitors the availability of web applications from a user perspective, and verifies the integrity of web content. For example, APM could monitor an e-commerce site and confirm that a specific price is being displayed on a particular page, while simultaneously monitoring server availability, alerting on server side code errors, and ensuring that all links are functioning correctly. APM even allows you to specify query strings in a URL to monitor dynamic web pages.

“Through a unified console we now have point-and-click access to comprehensive charts and detailed reports that deliver a clear portrait of the network traffic, thereby increasing our ability to enhance the performance, availability and security of the network.”

— Jeff Salisbury,
Senior Manager IT Infrastructure,
Belkin Components

MODEL	MANAGES:
APM 50	Up to 50 monitors
APM 100	Up to 100 monitors
APM 250	Up to 250 monitors
APM 500	Up to 500 monitors
APM 1000	Up to 1000 monitors
APM Unlimited	Unlimited monitors



Template-based Monitoring Configuration

APM saves you valuable time by facilitating the creation of application monitoring templates that can be applied to multiple servers and shared with other Orion installations. APM enables you to quickly create custom groups of monitors and settings that can be saved as monitoring templates - eliminating the need to perform repetitive configuration tasks for similar applications and servers. Additionally, these templates can be easily imported and exported for sharing with the SolarWinds community on Thwack.com.



Out-of-the-Box Application Reporting

Orion's advanced reporting engine enables you to quickly generate custom reports for application performance and server availability. APM offers a number of built-in reports that make it quick and easy to report on application and server performance over specific time periods. A simple interface facilitates customizing these built-in reports and also allows the creation of completely customized reports using SQL commands.

Advanced Application Alerting

With APM, you can quickly configure alerts for correlated events, sustained conditions, and complex combinations of device states. Additionally, APM supports automatic escalation of alerts and allows you to designate actions in response to particular alerts, ensuring that you can quickly respond to application performance degradation.

Enterprise-ready Management Infrastructure

APM scales to monitor large networks with thousands of servers and applications. Leveraging the mature Orion platform, APM delivers the scalability and stability you need to manage enterprise-class environments and offers long-term storage of application performance data for historical trending and regulatory compliance.

"We evaluated a number of solutions on the market and Orion is just as scalable and flexible as many other large, expensive framework solutions such as HP OpenView, but requires significantly less effort to use and maintain."

— Ronald Shaul,
Director of Technology,
Smart City Networks

HARDWARE	MINIMUM REQUIREMENTS
CPU	3 GHz
Memory	2GB or more
Hard Drive	5GB or more
SOFTWARE	MINIMUM REQUIREMENTS
Orion NPM	Version 8.5.1 or later
Operating System	Windows Server® 2003 (32-bit or 64-bit) including R2, with IIS installed
.Net Framework	Version 3.0 or later
Database	SQL Server® 2000 SP4 (Standard or Enterprise), SQL Server 2005 (Express, Standard, or Enterprise)

